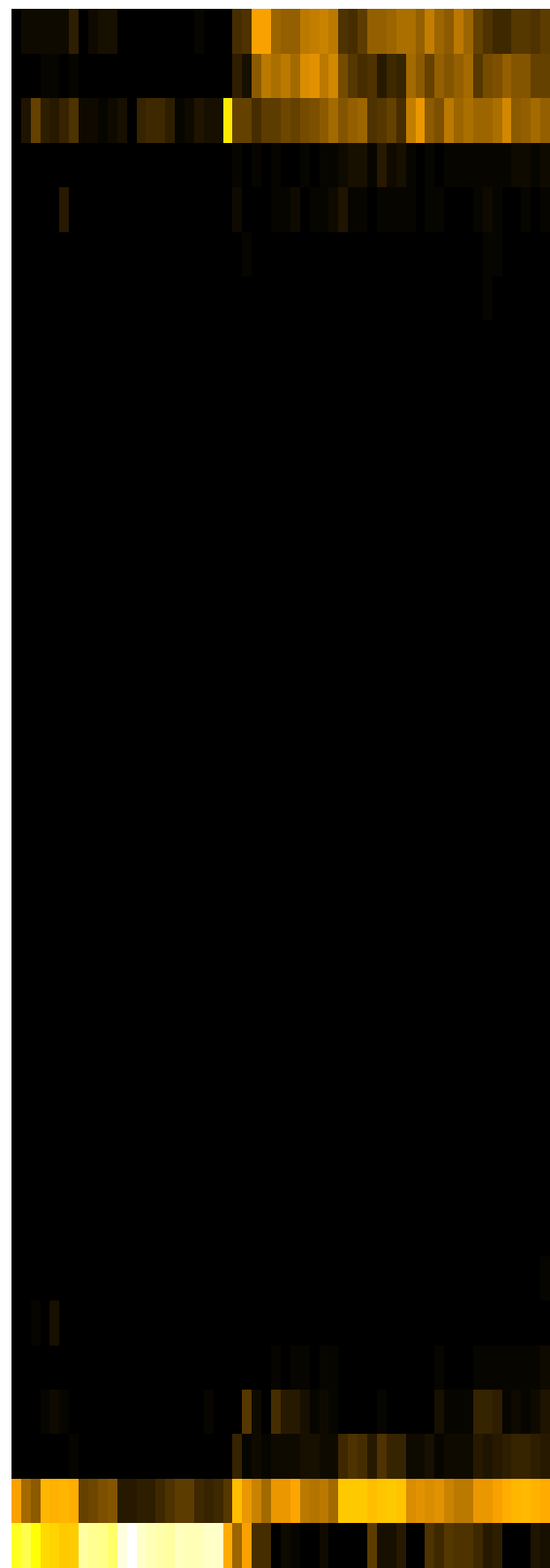
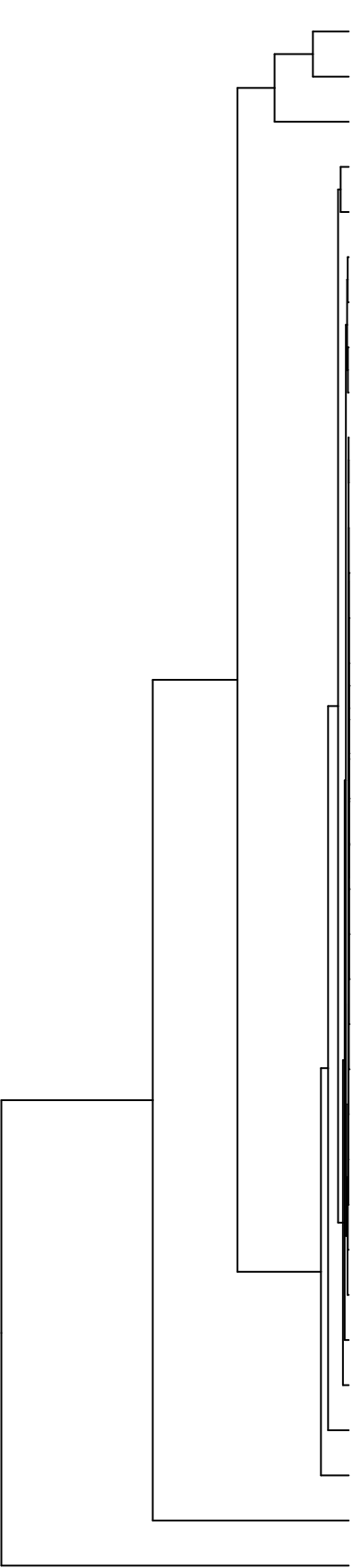


Group006
 J Final -PMA
 G Final -PMA



- Veillonellaceae
- Pasteurellaceae
- Neisseriaceae
- Actinomycetaceae
- Micrococcaceae
- Campylobacteraceae
- Leptotrichiaceae
- Porphyromonadaceae
- Prevotellaceae
- Atopobiaceae
- Burkholderiaceae
- Absconditabacteria_(SR1)_[F-1]
- Phyllobacteriaceae
- Flavobacteriaceae
- Yersiniaceae
- Moraxellaceae
- Shingomonadaceae
- Microbacteriaceae
- Rhizobiaceae
- Weeksellaceae
- Hymenobacteraceae
- Saccharibacteria_(TM7)_[F-2]
- Mycobacteriaceae
- Propionibacteriaceae
- Saccharibacteria_(TM7)_[F-1]
- Erysipelotrichaceae
- Comamonadaceae
- Lachnospiraceae
- Pseudomonadaceae
- Staphylococcaceae
- Gemellaceae
- Fusobacteriaceae
- Carnobacteriaceae
- Streptococcaceae
- Enterobacteriaceae

- F28914.S441
- F28914.S465
- F28914.S600
- F28914.S609
- F28914.S470
- F28914.S467
- F28914.S443
- F28914.S445
- F28914.S472
- F28914.S442
- F28914.S598
- F28914.S597
- F28914.S610
- F28914.S309
- F28914.S146
- F28914.S152
- F28914.S151
- F28914.S281
- F28914.S284
- F28914.S288
- F28914.S286
- F28914.S307
- F28914.S147
- F28914.S311
- F28914.S123
- F28914.S122
- F28914.S128
- F28914.S126

Samples

Family